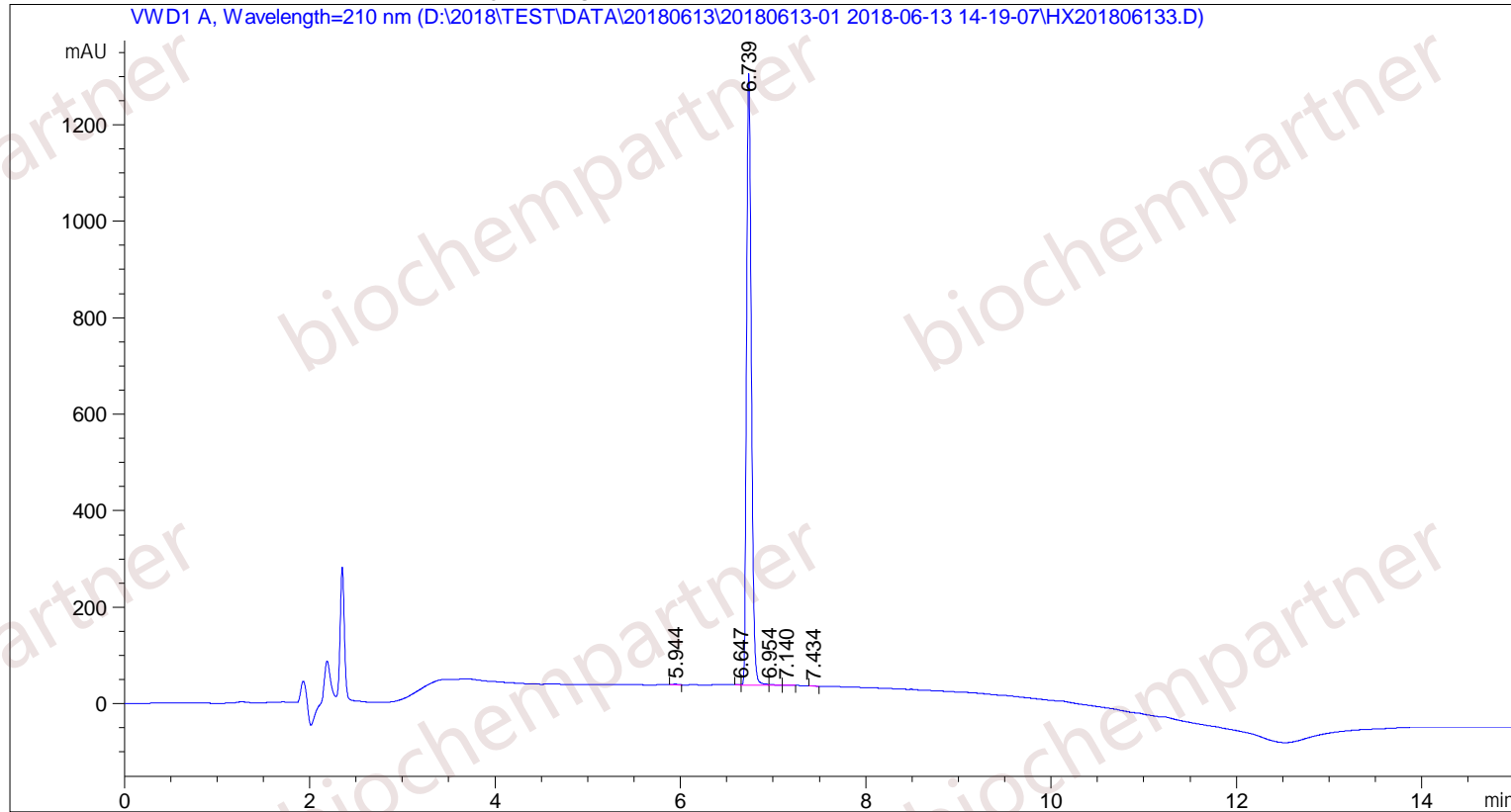


Sample Name: M-6-13-3

```

=====
Acq. Operator   : SYSTEM                               Seq. Line :    5
Acq. Instrument : Agilent HPLC                         Location  :   12
Injection Date  : 6/13/2018 3:47:32 PM                 Inj       :    1
                                                    Inj Volume: 5.000 µl
Different Inj Volume from Sample Entry! Actual Inj Volume : 1.000 µl
Acq. Method     : D:\2018\TEST\DATA\20180613\20180613-01 2018-06-13 14-19-07\5-(10)-100(5)-1-40-210.M
Last changed    : 6/13/2018 2:19:07 PM by SYSTEM
Analysis Method : D:\2018\TEST\DATA\20180613\20180613-01 2018-06-13 14-19-07\5-(10)-100(5)-1-40-210.M (Sequence Method)
Last changed    : 6/14/2018 10:41:17 AM by SYSTEM
                  (modified after loading)
Additional Info : Peak(s) manually integrated
    
```



Area Percent Report

```

Sorted By      : Signal
Multiplier     : 1.0000
Dilution       : 1.0000
Use Multiplier & Dilution Factor with ISTDs
    
```

Signal 1: VWD1 A, Wavelength=210 nm

Peak #	RetTime [min]	Type	Width [min]	Area [mAU*s]	Height [mAU]	Area %
1	5.944	MM	0.0596	6.32881	1.76900	0.1392
2	6.647	MF	0.0470	2.32075	8.23172e-1	0.0510
3	6.739	MF	0.0594	4522.87939	1269.88025	99.4670
4	6.954	MF	0.0724	8.00440	1.84290	0.1760

Sample Name: M-6-13-3

Peak #	RetTime [min]	Type	Width [min]	Area [mAU*s]	Height [mAU]	Area %
5	7.140	FM	0.0924	5.46193	9.84931e-1	0.1201
6	7.434	MM	0.0557	2.12050	6.34638e-1	0.0466

Totals : 4547.11578 1275.93488

=====
*** End of Report ***