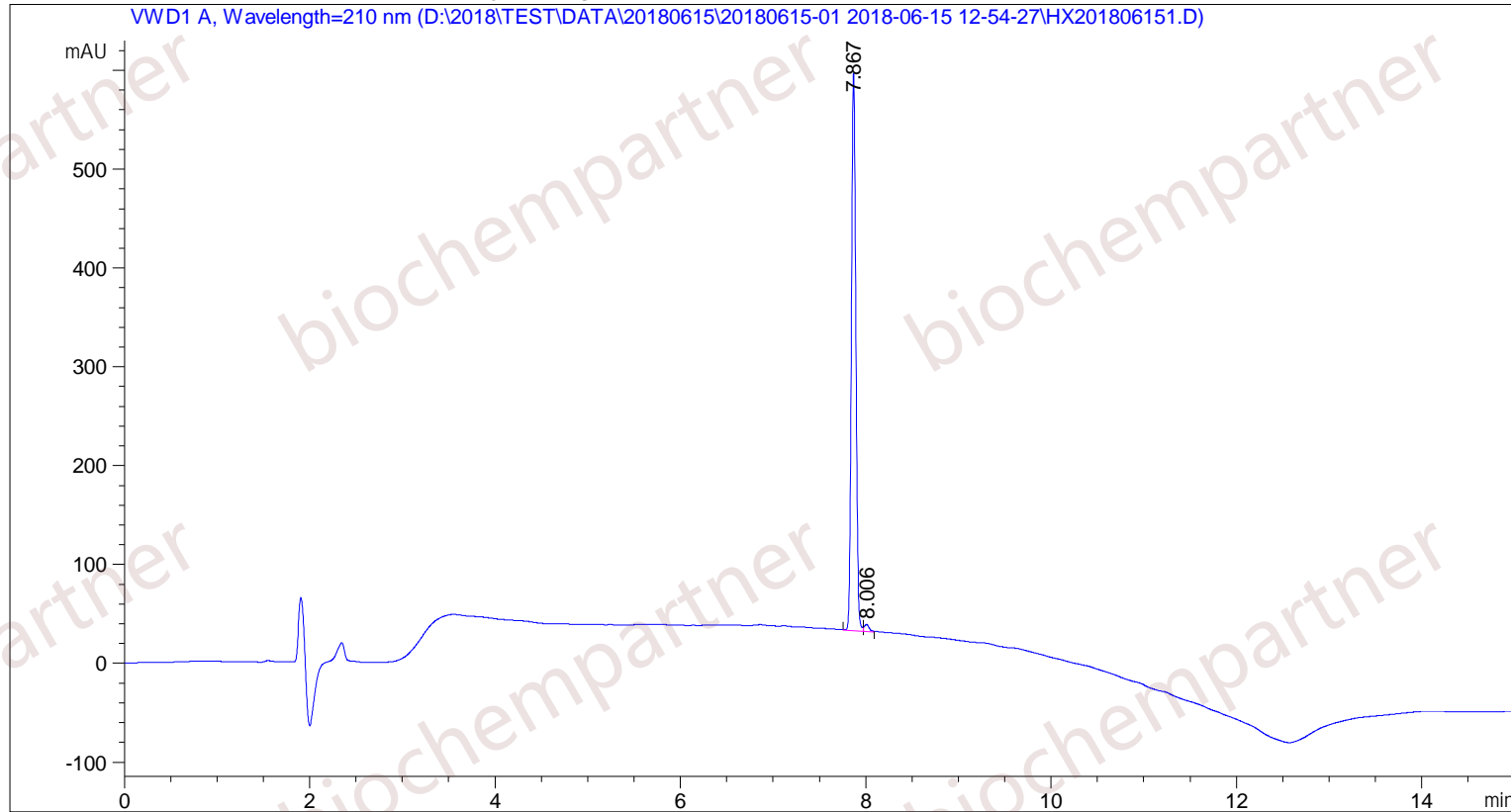


Sample Name: M-6-15-15

```

=====
Acq. Operator   : SYSTEM                               Seq. Line :    5
Acq. Instrument : Agilent HPLC                         Location  :    6
Injection Date  : 6/15/2018 2:31:02 PM                Inj       :    1
                                                    Inj Volume: 5.000 µl
Different Inj Volume from Sample Entry! Actual Inj Volume : 2.000 µl
Acq. Method     : D:\2018\TEST\DATA\20180615\20180615-01 2018-06-15 12-54-27\5-(10)-100(5)-1-40-210.M
Last changed    : 6/15/2018 12:54:27 PM by SYSTEM
Analysis Method : D:\2018\TEST\DATA\20180615\20180615-01 2018-06-15 12-54-27\5-(10)-100(5)-1-40-210.M (Sequence Method)
Last changed    : 6/15/2018 3:24:31 PM by SYSTEM
                  (modified after loading)
Additional Info : Peak(s) manually integrated
    
```



Area Percent Report

```

Sorted By      :      Signal
Multiplier     :      1.0000
Dilution       :      1.0000
Use Multiplier & Dilution Factor with ISTDs
    
```

Signal 1: VWD1 A, Wavelength=210 nm

Peak #	RetTime [min]	Type	Width [min]	Area [mAU*s]	Height [mAU]	Area %
1	7.867	MF	0.0544	1847.56836	566.03259	98.5235
2	8.006	FM	0.0626	27.68841	7.37617	1.4765

Totals : 1875.25677 573.40877

=====
*** End of Report ***