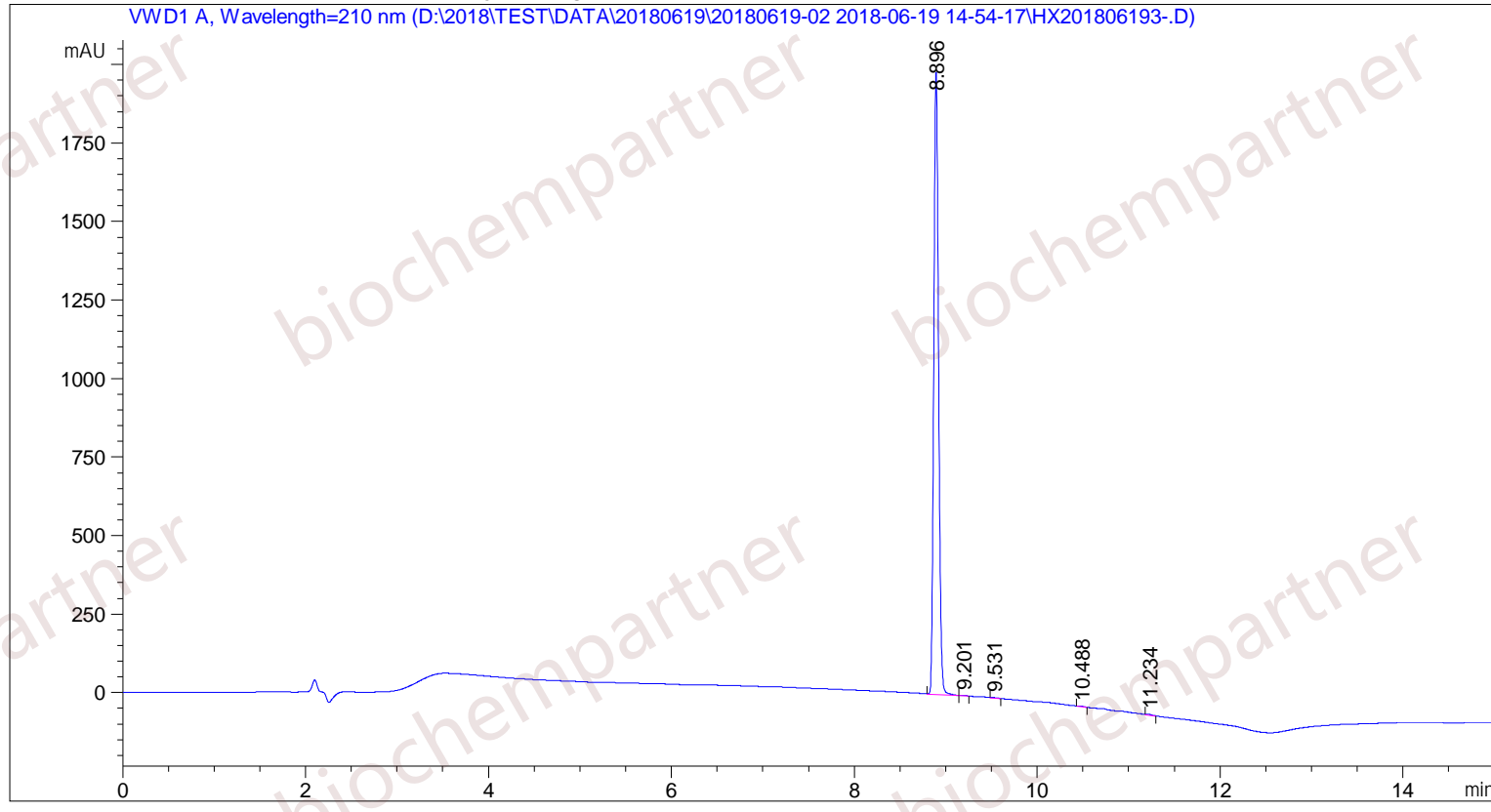


Sample Name: M-6-19-27

```

=====
Acq. Operator   : SYSTEM                               Seq. Line :    3
Acq. Instrument : Agilent HPLC                         Location  :   12
Injection Date  : 6/19/2018 3:43:10 PM                Inj       :    1
                                                    Inj Volume: 5.000 µl
Different Inj Volume from Sample Entry! Actual Inj Volume : 1.500 µl
Acq. Method     : D:\2018\TEST\DATA\20180619\20180619-02 2018-06-19 14-54-17\5-(10)-100(5)-1-40-210.M
Last changed    : 6/19/2018 2:54:17 PM by SYSTEM
Analysis Method : D:\2018\TEST\DATA\20180619\20180619-02 2018-06-19 14-54-17\5-(10)-100(5)-1-40-210.M (Sequence Method)
Last changed    : 6/19/2018 4:50:26 PM by SYSTEM
                (modified after loading)
Additional Info : Peak(s) manually integrated
    
```



Area Percent Report

```

Sorted By      :      Signal
Multiplier     :      1.0000
Dilution       :      1.0000
Use Multiplier & Dilution Factor with ISTDs
    
```

Signal 1: VWD1 A, Wavelength=210 nm

Peak #	RetTime [min]	Type	Width [min]	Area [mAU*s]	Height [mAU]	Area %
1	8.896	MF	0.0592	7052.68457	1986.61694	99.4989
2	9.201	FM	0.0700	10.85906	2.58454	0.1532
3	9.531	FM	0.0748	6.69684	1.49193	0.0945
4	10.488	MM	0.0615	6.82964	1.85086	0.0964

Sample Name: M-6-19-27

Peak #	RetTime [min]	Type	Width [min]	Area [mAU*s]	Height [mAU]	Area %
5	11.234	MM	0.0777	11.13666	2.38901	0.1571

Totals : 7088.20677 1994.93329

=====
*** End of Report ***