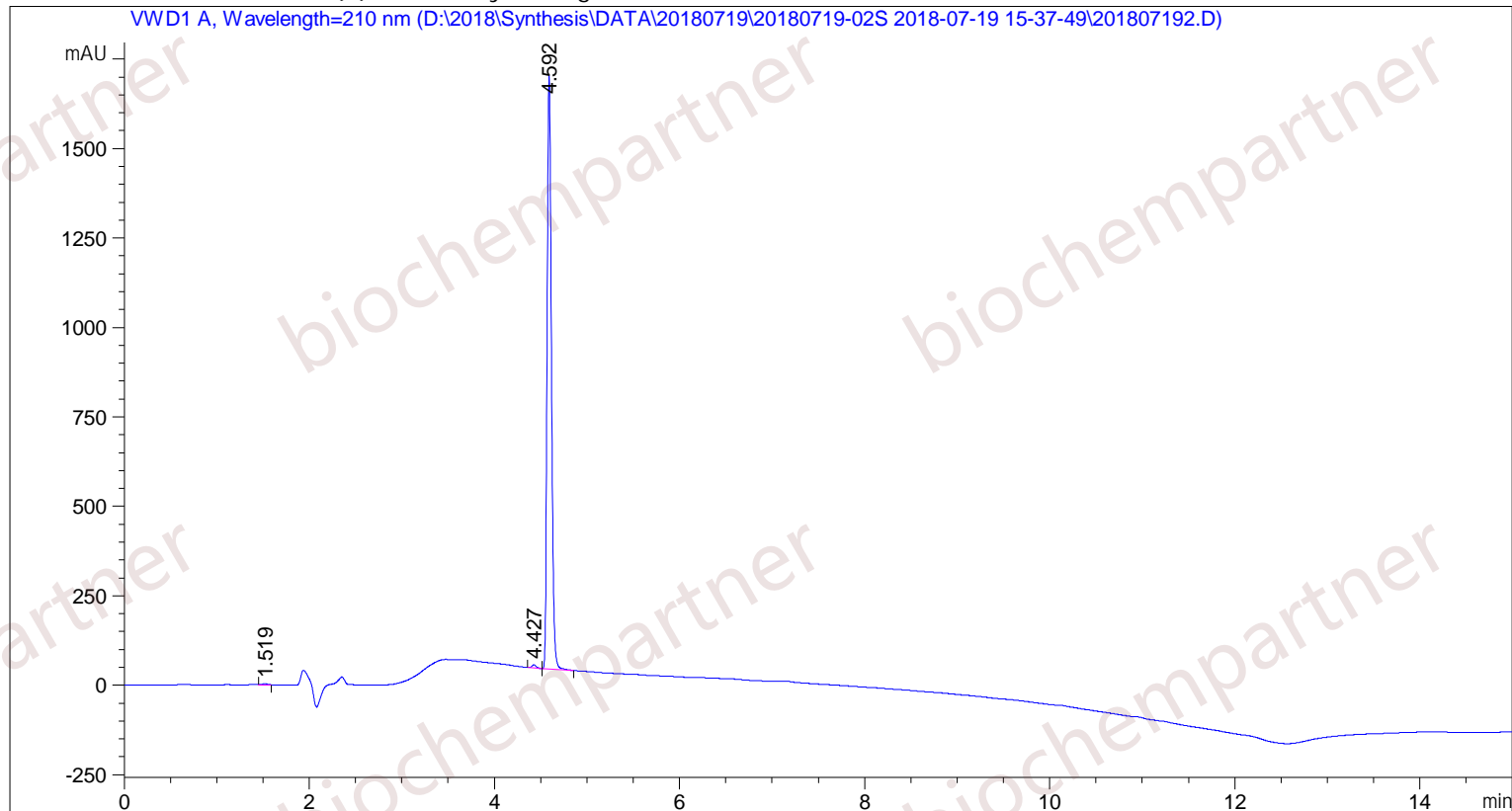


Sample Name: M-7-19-10

```

=====
Acq. Operator   : SYSTEM                               Seq. Line :    3
Acq. Instrument : Agilent HPLC                         Location  :   53
Injection Date  : 7/19/2018 4:26:54 PM                 Inj       :    1
                                                    Inj Volume: 5.000 µl
Different Inj Volume from Sample Entry! Actual Inj Volume : 1.000 µl
Acq. Method     : D:\2018\Synthesis\DATA\20180719\20180719-02S 2018-07-19 15-37-49\5-(10)-100
                  (5)-1-40-210.M
Last changed    : 7/19/2018 3:37:49 PM by SYSTEM
Analysis Method : D:\2018\Synthesis\DATA\20180719\20180719-02S 2018-07-19 15-37-49\5-(10)-100
                  (5)-1-40-210.M (Sequence Method)
Last changed    : 7/19/2018 4:54:49 PM by SYSTEM
                  (modified after loading)
Additional Info : Peak(s) manually integrated
    
```



Area Percent Report

```

Sorted By      :      Signal
Multiplier     :      1.0000
Dilution       :      1.0000
Use Multiplier & Dilution Factor with ISTDs
    
```

Signal 1: VWD1 A, Wavelength=210 nm

Peak #	RetTime [min]	Type	Width [min]	Area [mAU*s]	Height [mAU]	Area %
1	1.519	MM	0.0599	12.51437	3.47997	0.2335
2	4.427	MF	0.0516	28.01688	9.04202	0.5228
3	4.592	FM	0.0534	5318.54443	1661.46326	99.2437

Totals : 5359.07569 1673.98525

=====
*** End of Report ***