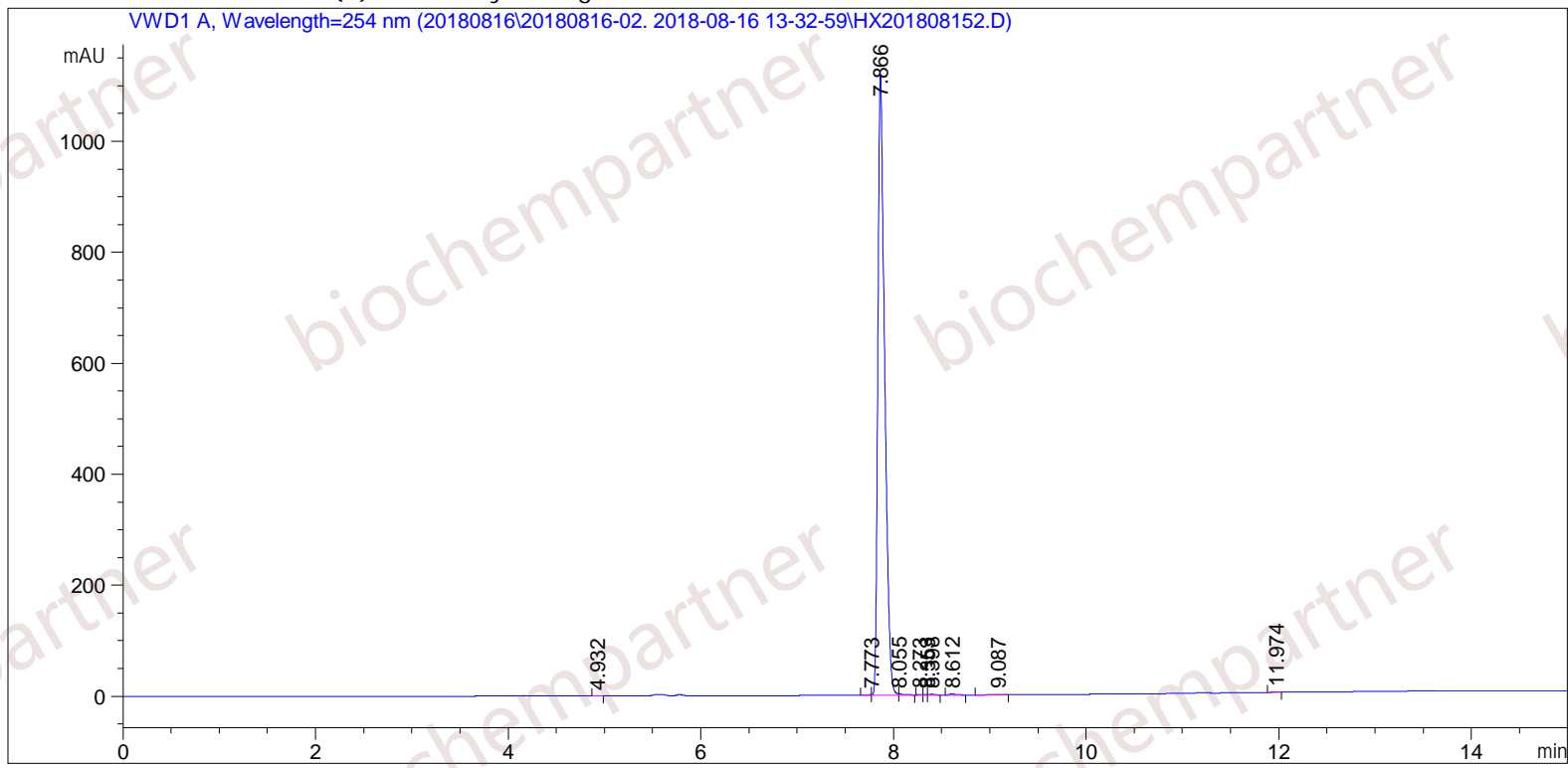


Sample Name: M-8-16-13

=====

Acq. Operator	: SYSTEM	Seq. Line	: 1
Acq. Instrument	: Agilent HPLC	Location	: 44
Injection Date	: 8/16/2018 1:39:20 PM	Inj	: 1
		Inj Volume	: 5.000 µl
Different Inj Volume from Sample Entry!		Actual Inj Volume	: 0.700 µl
Acq. Method	: C:\Chem32\1\Data\20180816\20180816-02. 2018-08-16 13-32-59\5-(10)-100(5)-1-40-254.M		
Last changed	: 8/16/2018 1:32:59 PM by SYSTEM		
Analysis Method	: C:\Chem32\1\Data\20180816\20180816-02. 2018-08-16 13-32-59\5-(10)-100(5)-1-40-254.M (Sequence Method)		
Last changed	: 8/16/2018 3:07:08 PM by SYSTEM (modified after loading)		
Additional Info : Peak(s) manually integrated			



=====  
Area Percent Report  
=====

Sorted By : Signal  
Multiplier : 1.0000  
Dilution : 1.0000  
Use Multiplier & Dilution Factor with ISTDs

Signal 1: VWD1 A, Wavelength=254 nm

Peak #	RetTime [min]	Type	Width [min]	Area [mAU*s]	Height [mAU]	Area %
1	4.932	MM	0.0621	6.54456e-1	1.75627e-1	0.0121
2	7.773	MF	0.0508	2.72899	8.95117e-1	0.0506
3	7.866	MF	0.0800	5367.07178	1117.89233	99.4707
4	8.055	FM	0.0487	6.27787	2.14930	0.1164
5	8.273	MF	0.0513	7.55530e-1	2.45254e-1	0.0140
6	8.353	MF	0.0339	1.52885	7.51264e-1	0.0283
7	8.398	FM	0.0678	5.65410	1.39030	0.1048
8	8.612	BB	0.0594	7.79836	2.00355	0.1445
9	9.087	BB	0.0854	2.48225	4.17523e-1	0.0460
10	11.974	MM	0.0813	6.78794e-1	1.39144e-1	0.0126

Totals : 5395.63097 1126.05941

=====  
\*\*\* End of Report \*\*\*