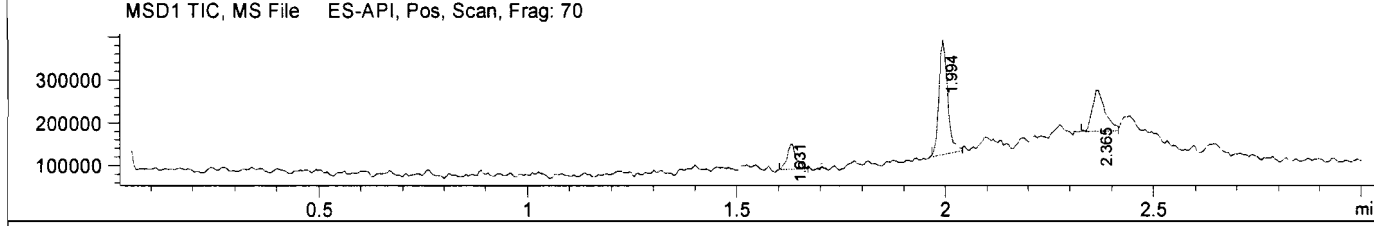
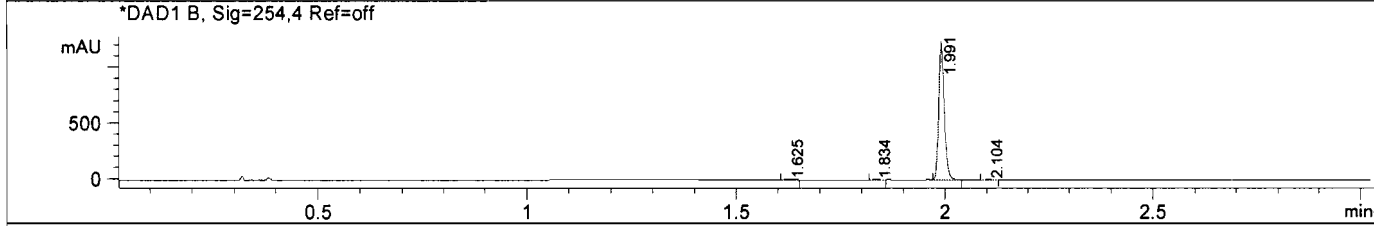
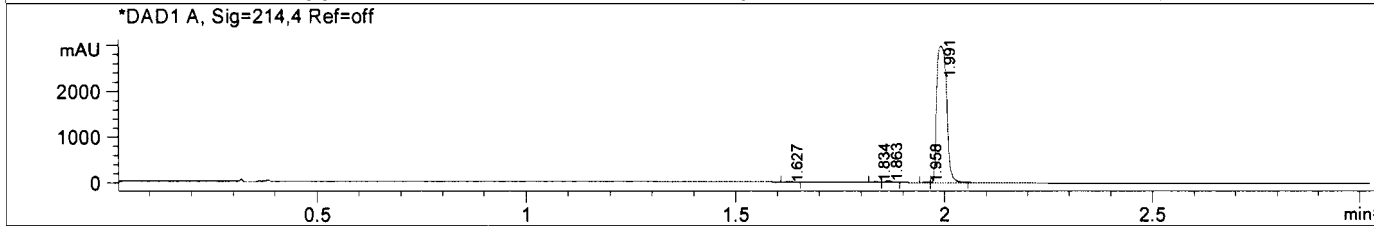
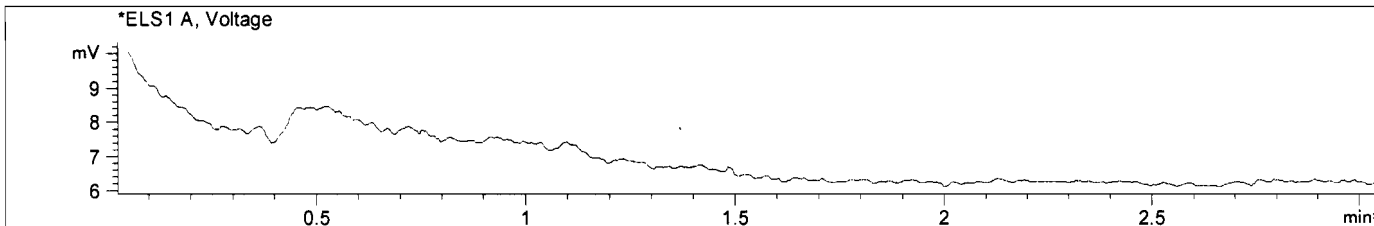


LC/MS Report

File D:\DATA\MONITOR\6-bromo-1-methyl-indazole-LCMS.D
 Injection Date : 28 Jan 13 5:44 pm +0800 Tgt Mass (EZX) :
 Sample Name : 6-bromo-1-methyl-indazole Location : P1-E-02
 Acq. Operator : LCMS Inj : 1
 Spec. Reported : MS Integration Inj Volume : 2 ul
 Acq. Method : C:\Chem32\1\METHODS\1-POS-3MIN.M
 Analysis Method : C:\Chem32\1\METHODS\1-POS-3MIN.M
 Sample Info : *** No target masses specified ***
 Method Info : Mobile Phase: A: water (10mM Ammonium hydrogen carbonate) B: ACN
 Gradient: 5%-95% B in 1.5min
 Flow Rate: 2.0ml/min
 Column: XBridge C18, 4.6*50mm, 3.5um
 Oven Temperature: 40 C
 MASS Range: 110-800



Integration Results for ELS1 A, Voltage

RetTim	Width	Area	Height	Area%
--------	-------	------	--------	-------

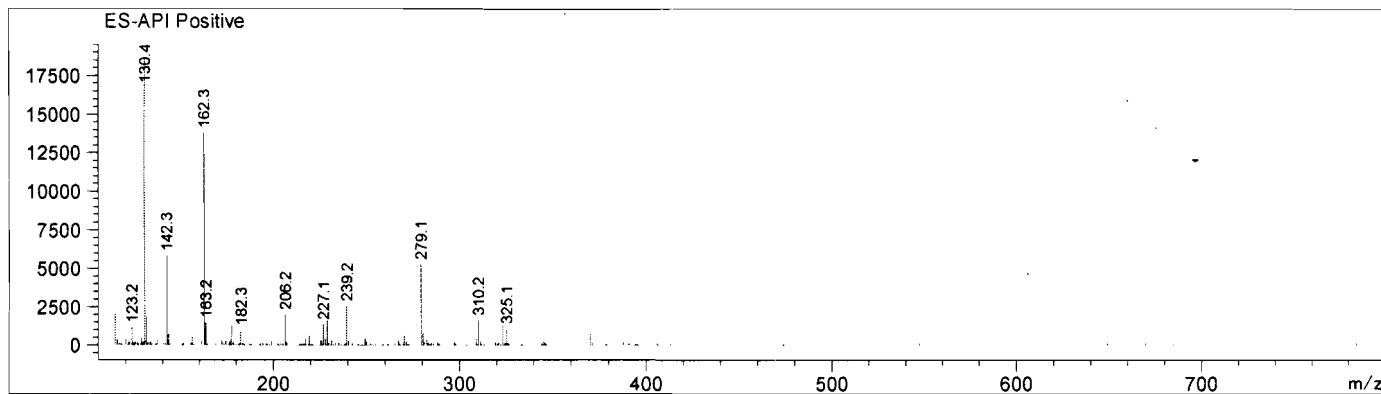
Integration Results for DAD1 A, Sig=214,4 Ref=off

RetTim	Width	Area	Height	Area%
1.63	0.02	5.77	5.69	0.11
1.83	0.01	18.53	20.94	0.37
1.86	0.01	31.28	33.45	0.62
1.96	0.01	13.47	16.25	0.27
1.99	0.03	4964.46	2993.55	98.63

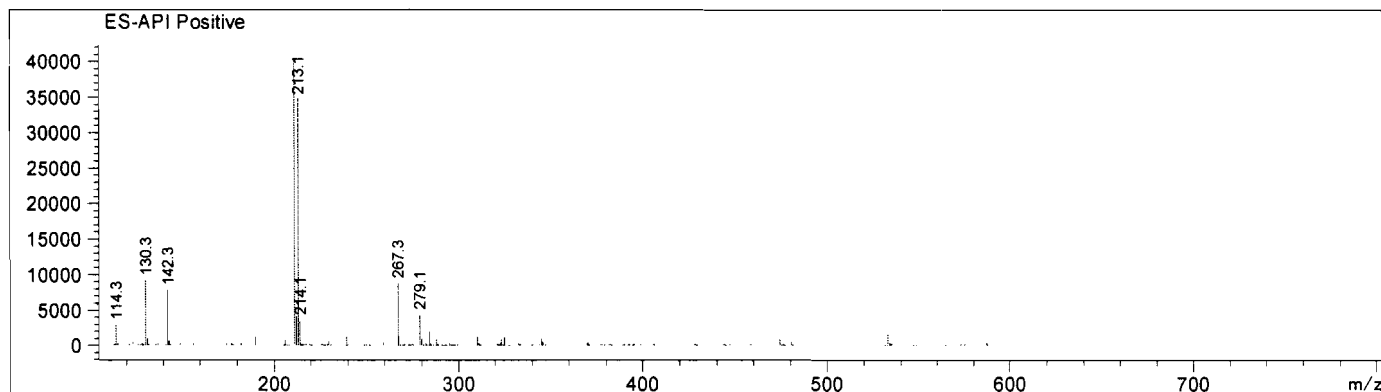
Integration Results for DAD1 B, Sig=254,4 Ref=off

RetTim	Width	Area	Height	Area%
1.63	0.02	2.98	2.85	0.25
1.83	0.01	2.00	2.22	0.17
1.99	0.01	1175.05	1228.33	99.39
2.10	0.02	2.24	2.17	0.19

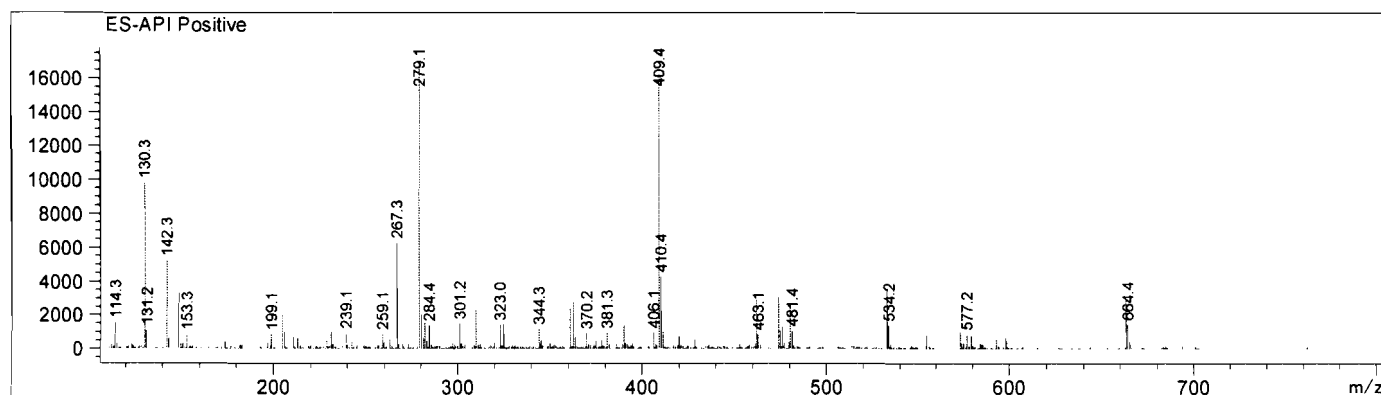
Ret. Time: 1.63 <<<< POSITIVE SPECTRA >>>>

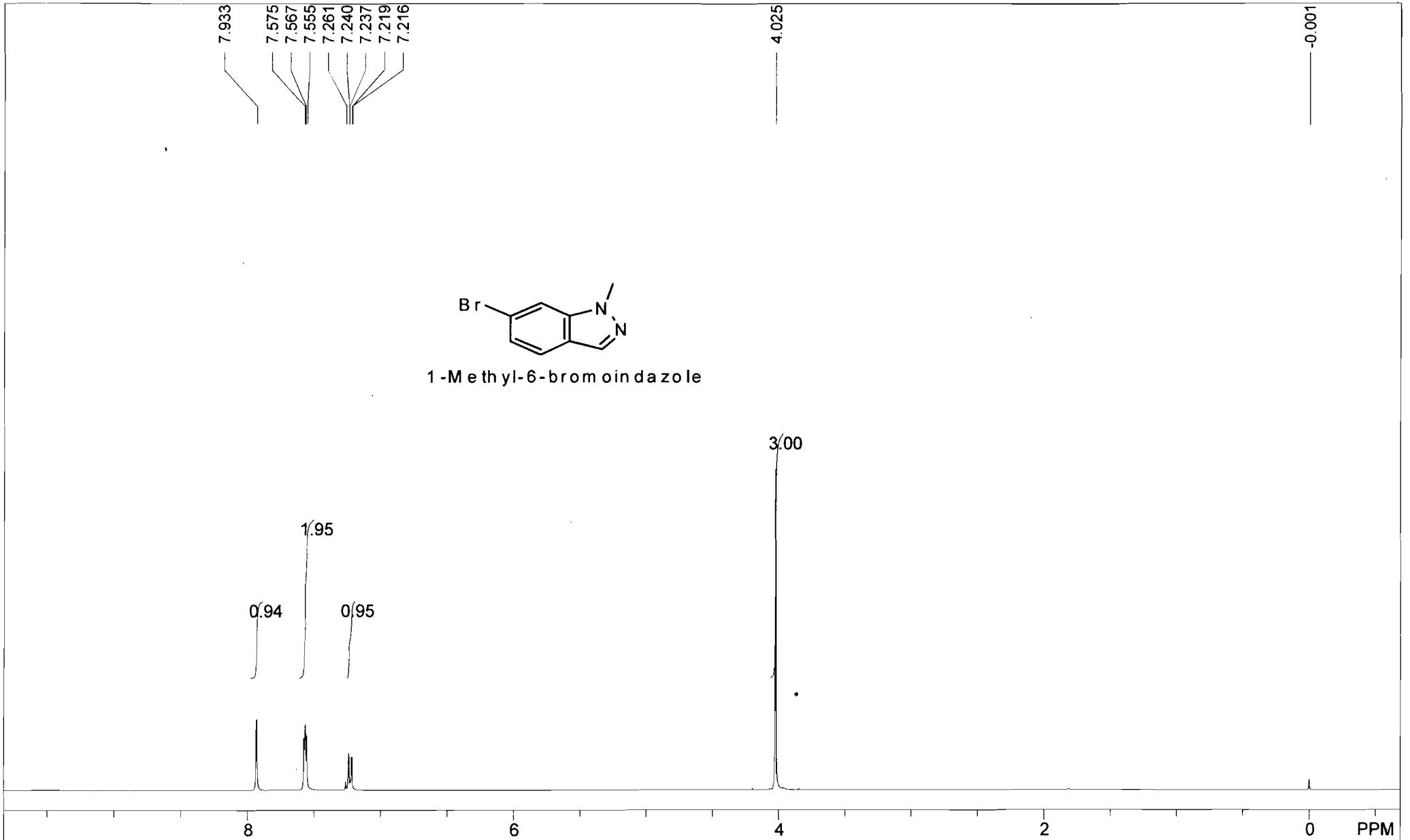


Ret. Time: 1.99



Ret. Time: 2.37





NMRB003, CDCl₃,

USER: nmrB601 -- DATE: Mon Jan 28 09:56:04 2013

F1: 400.132

F2: 1.000

SW1: 8224

OF1: 2466.0

PTS1d: 32768

EX: zg30

PW: 13.8 usec

PD: 1.0 sec

NA: 8

LB: 0.0

Nuts - \$pdata